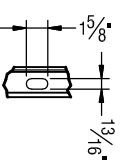
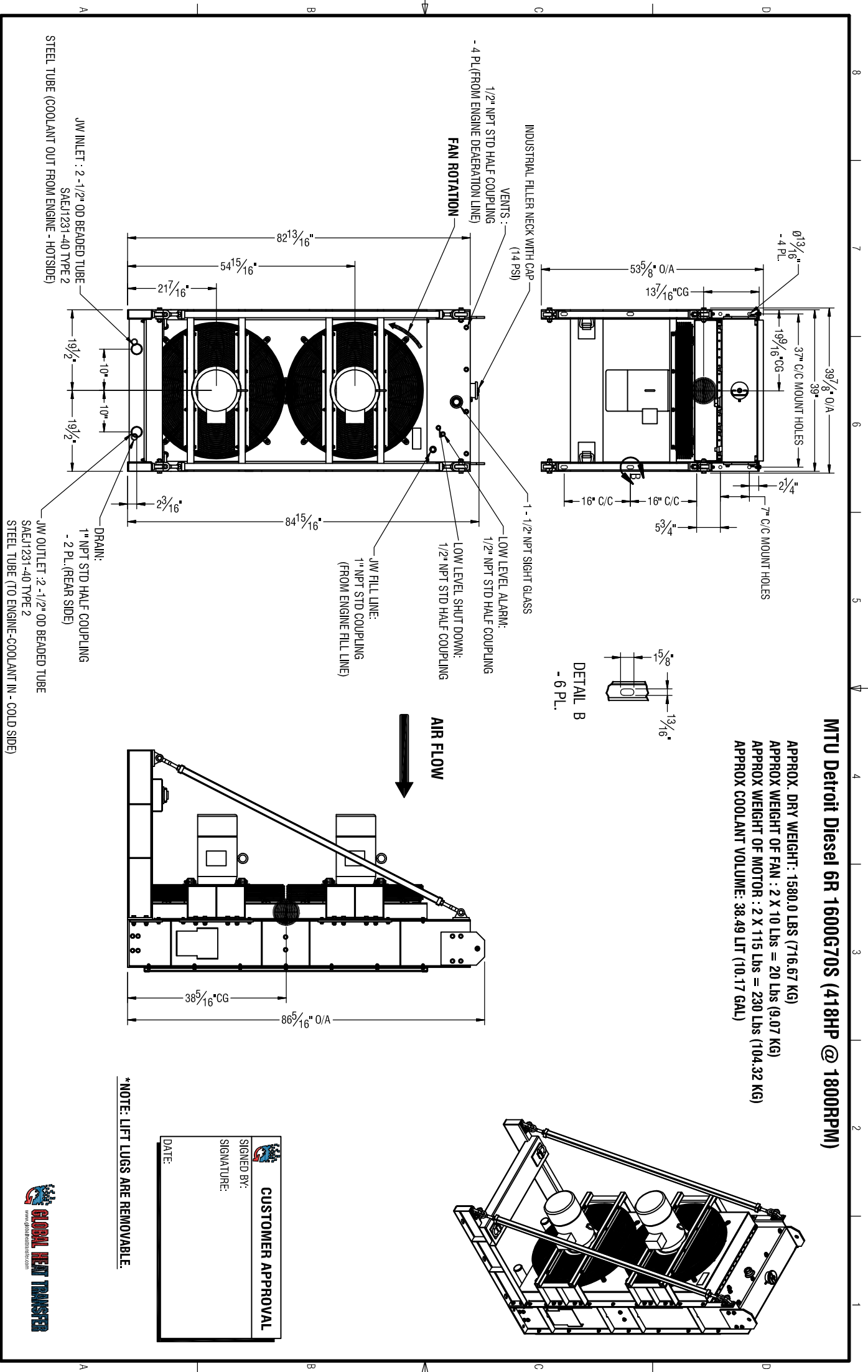


MTU Detroit Diesel 6R 1600G70S (418HP @ 1800RPM)

APPROX. DRY WEIGHT: 1580.0 LBS (716.67 KG)
 APPROX WEIGHT OF FAN : 2 X 10 Lbs = 20 Lbs (9.07 KG)
 APPROX WEIGHT OF MOTOR : 2 X 115 Lbs = 230 Lbs (104.32 KG)
 APPROX COOLANT VOLUME: 38.49 LIT (10.17 GAL)



DETAIL B
- 6 PL.



AIR FLOW

*NOTE: LIFT LUGS ARE REMOVABLE.



CUSTOMER APPROVAL

SIGNED BY: _____

SIGNATURE: _____

DATE: _____

No.	Revisions/Description	By	Date
0.	AS-BUILT	FAD	JAN21 15
1.			
2.			
3.			
4.			
5.			
6.			



INFORMATION INCLUDED IN THIS DRAWING IS PROPRIETARY AND IS NOT TO BE REPRODUCED, DISTRIBUTED OR DISCLOSED EXCEPT AS SPECIFICALLY AUTHORIZED IN WRITING BY WAJAX POWER SYSTEMS.

CUSTOMER	SHAW - CHURCHILL	PROJECT	GENSET UNIT MODIFICATIONS	TITLE	ENGINE JACKET WATER RADIATOR ASSEMBLY DRAWING - COOLANT CONNECTIONS	QTY	1	SHT.	1 OF 1
DESIGNED BY:	FAD	CHECKED BY:		SCALE	N/A	DESIGN LEAD APPROVAL		DATE	TBA
PRODUCT NO.	13355-14913	REF. MTU DRAWING NO.	N/A	DRAWING NO.	32000516 1944 VI				